



**Schloss  
Neubeuern**  
INTERNATSHAUSSCHULE

Knowing what to do.

# International students





## Preparing for a shared world

Dear pupils, dear parents,

What began as tutoring for international students is now a well-functioning system that carefully prepares students from a wide variety of countries of origin to successfully participate in regular classes at our secondary school.

With a high level of linguistic competence and a great deal of empathy for young people from different cultures, the teaching team in the International Department ensures their integration into everyday school life. As guest students, they initially concentrate on learning the language and then, depending on the development of their German language skills, increasingly participate in regular lessons. After just six months, every student is almost completely integrated into their own class. Once they have passed the entrance examination, international students become regular students. After a subsequent six-month probationary period, our international students are finally well prepared for the challenges of their further school career in Germany. The additional lessons in German as a foreign language continue until the Abitur (German university entrance qualification). The excellent A-level results achieved by our international students are testament to their high level of motivation and the success of our language support programme.

The International Department at Schloss Neubeuern is a home away from home for young people from around twenty different countries. It provides them with important emotional support, helping them to find their feet in what is initially a foreign culture. This integration model, with its comprehensive individual support, is unique among German boarding schools. At Schloss Neubeuern, we place great value on cosmopolitanism, diversity and cultural exchange. Respect and tolerance are important to us in our interactions – they shape the attitude of our boarding school community for a hopeful future that we are creating together.

Susanne Schörghuber  
headmistress

Thomas Straßer  
headmaster

# Integration phase at school & boarding school

## Unique school model

Moving from your parents' home to a boarding school is not easy for any young person. Especially when it is far from home and everything feels unfamiliar. We make this difficult transition easier for our international students by carefully integrating them into regular school lessons. In our 'International Department', the young people are welcomed by a competent and experienced team of teachers and, depending on their level of German, receive very individual support. Integration into most subjects is achieved after just six months. Our international students always feel supported – the International Department remains a familiar and helpful point of contact until they graduate.

## International support at boarding school

At Schloss Neubeuern, we place great value on our international community, where we feel enriched by other cultures and can learn a lot from each other. To ensure that this intercultural coexistence is successful, we work with an international team of mentors at the boarding school. Every student finds a trusted person who understands them well, including linguistically, and is there for them. In the seven boarding school groups, the age groups and room partners are deliberately mixed, regardless of their country of origin. Through many joint leisure activities and excursions, not only do close friendships develop, but the children and young people also learn to interact with each other in an open-minded and tolerant manner.

## Community of responsibility

It is not only its particularly beautiful and idyllic location that gives our school grounds around the historic castle a special sense of values and a very familiar atmosphere. Thanks to a wide range of guilds and social services, as well as the exciting programme offered by the Schloss-ACADEMY, our students not only obtain their A-levels but also develop a high level of social competence. Many traditional events, which are not only celebrations but also require everyone to pitch in, create a sense of closeness and give students the feeling of being there for one another. From their very first day, our students commit to our value-oriented community and learn the rules of responsible social behaviour throughout their time at school and boarding school. Adherence to these rules is just as important to us as friendly cohesion – far beyond the Abitur.



# Your path to the school leaving certificate

AT SCHLOSS NEUBEUERN

## One school year of integration

As a pupil from a non-German school system, you will start with us as a 'guest pupil' for one year. Here is what you need to know:

- Under school law, your performance is not recorded in regular school reports, but in grade overviews and detailed verbal assessments for guidance purposes.
- Your status as a guest student ends when you pass the entrance examination.

## Admission requirements/visas for applicants from outside the EU

You can obtain the visa required for your stay with us at the earliest at the age of 14, unless your parents already have a residential address in Germany or you have German citizenship. The relevant application should be submitted in good time – we will support you and your parents in this process.

## Language requirements for getting started

### Entry into Year 9

If you do not speak German, a good command of English is required (recommendation A2\*).

### Entry into Year 10

B1\* and good English skills are required.

### Entry into Year 11

B2\* and good English skills are required.

\* Common European Framework of Reference

[www.europaeischer-referenzrahmen.de](http://www.europaeischer-referenzrahmen.de)

## Learning content

- German as a foreign language lessons from A1 to C2 by qualified German as a foreign language teachers
- Lessons in small groups and participation in regular lessons depending on language level
- Orientation towards the grammar school requirements and performance profile
- Technical language instruction to support regular classes
- Gradual introduction to the specific learning requirements and learning objectives of the respective year group
- gradual integration into regular classes
- Regular feedback from teachers on learning progress in the form of verbal assessments
- Preparation for the entrance examination for pupils aiming to obtain their school leaving certificate
- Alternatively, for a one-year stay: general improvement of German language skills and getting to know German culture

## School probationary period

After passing the entrance examination, there is a six-month probationary period.

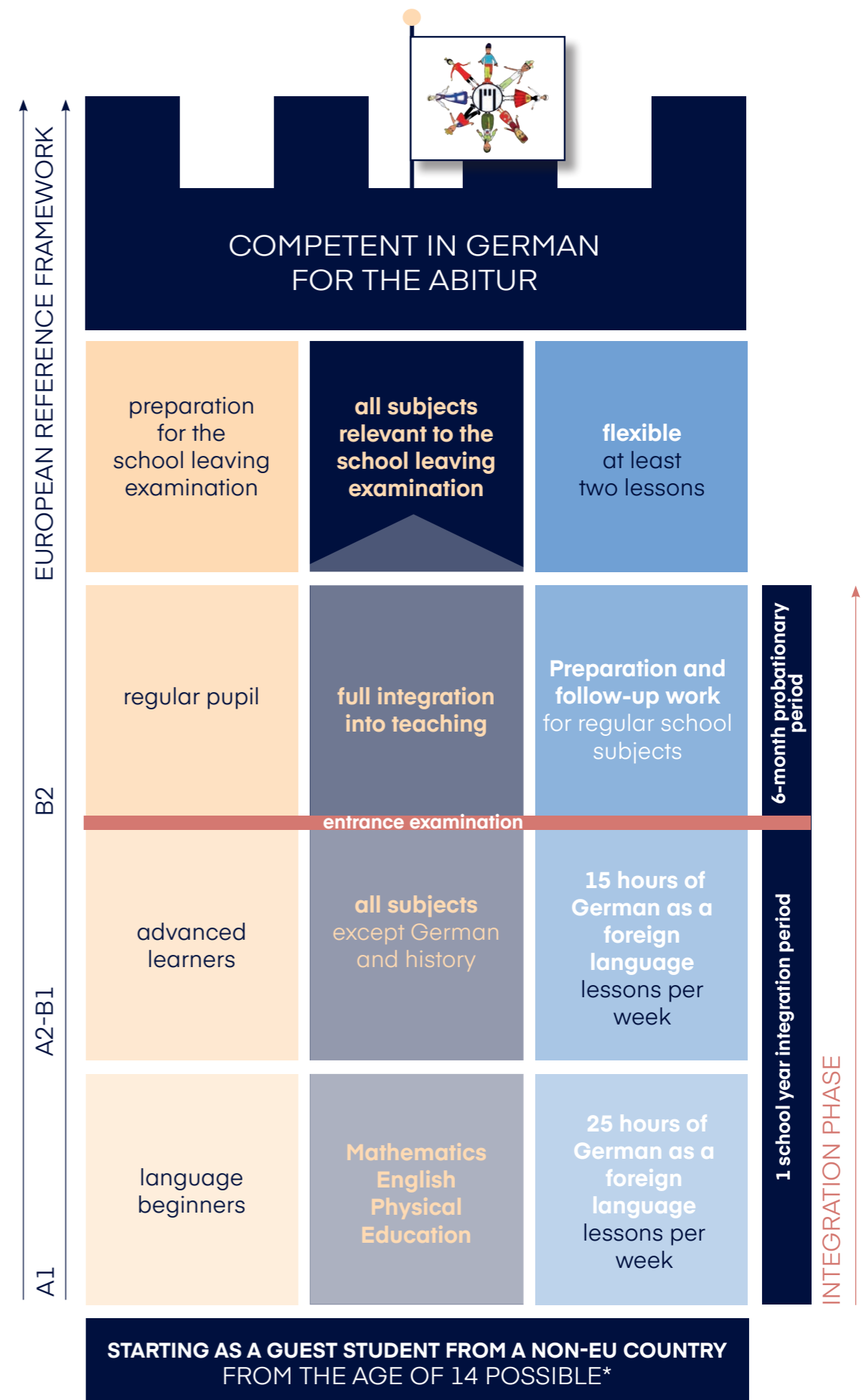
## 2nd foreign language

It is possible to replace the second foreign language with the mother tongue (external assessment test) up to and including Year 11.

The modern foreign languages Chinese and Russian, which are taught at the school, can be chosen as A-level subjects, with pupils taking a colloquium in Chinese and either a written or oral examination in Russian.

## Temporary stays for international pupils

1. If you come from a German school abroad, we can accept you as a regular pupil for one year. To improve your language skills, you can spend a year with us as a guest pupil.
2. As an international student, you will complete a (one-year) stay for language training as a guest student.



\*unless the child's parents have a residential address in Germany or the pupils have German citizenship.

# How we help you learn

AS A REGULAR PUPIL AT OUR  
BOARDING SCHOOL GRAMMAR SCHOOL



## Your status as a regular pupil

Our International Department is still there for you even after you have passed your entrance examination. The team of teachers will support you in preparing for examinations, presentations and research projects.

## Silentium, learning office & learning forum

In addition, you will of course benefit from all the learning opportunities offered by our regular school through the promotion of independent learning, teamwork and learning support.



## The whole world is open to you.

Become part of our international community! We are delighted about your commitment to our school and boarding school community. Several of our international students have already received our school's honorary award for this. It will help you open doors in your future job applications. You will make many friends here – most of which will last a lifetime.



# How we nurture your talent

BEYOND REGULAR CLASSES



## Castle competition for Years 9 and 10

- Support for gifted students: additional courses and specialisations
- Promotion of argumentation skills
- Expansion of social skills
- Promotion of creativity

## Promotion of STEM subjects

With our modern STEM centre, we open the door to interdisciplinary teaching, joint projects with universities and participation in exciting competitions such as 'Jugend Forscht' (Youth Researches). Our students benefit from a complete laboratory facility that is unique among German schools and equipped with the latest safety standards. This makes Schloss Neubeuern the perfect school for all young people interested in science.



## Schloss Neubeuern ACADEMY for all year groups

### Unit 1 – Business

Economic knowledge for the future

### Unit 2 – Exam

Preparation for exams/A-levels

### Unit 3 – Culture

Art, culture and tradition

### Unit 4 – Sports

Training for body and mind

### Unit 5 – Health

Nature, health, prevention

## Economics Plus in upper secondary school

Success stories, knowledge impulses and food for thought from decision-makers in business, politics and science complement your academic economic education and offer you space for your own experiences and encounters:

- Exciting insights into topics from business and science
- Proximity and contact with top experts and entrepreneurs
- Networking

# Guilds & Social Services

AT SCHLOSS NEUBEUERN



Courses in sports, music, crafts and much more give our students plenty of opportunities to try new things, build self-confidence, switch off from everyday school life and, above all, have lots of fun. With up to 30 guilds on offer, changing annually, there is definitely something for you – so you can discover a whole new talent in yourself or further develop your existing skills.

## Guild selection

- Applied computer science
- Movement arts & gymnastics
- Fencing
- Fitness for women
- Football
- Golf (Patting Golf Club)
- Drama workshop
- Cooking
- Horse riding
- Chess
- Schlossensemble (school band)
- Dance class
- Table tennis & badminton
- Yoga

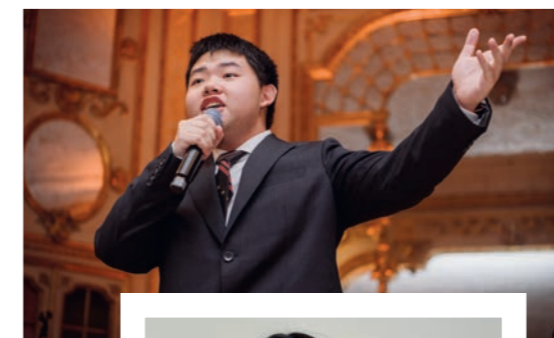
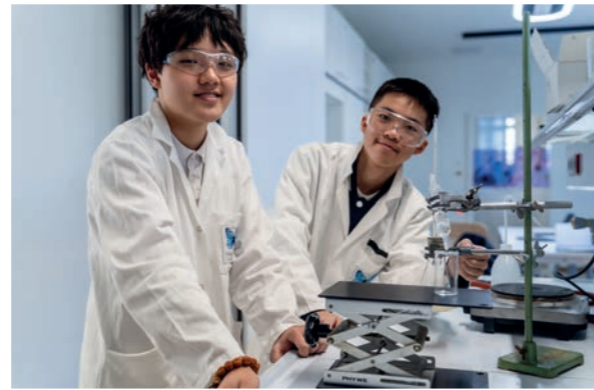
Taking responsibility – for yourself and for others – is not always easy, but it feels good in the end. You will quickly discover this in our castle community. Here, everyone contributes to the community, and there are plenty of opportunities to do so:

## Selection of social services

- Bar and festival committee
- Library
- Event team
- Café EDEN
- Fire brigade
- School first aiders
- Politics & debating
- Castle ensemble (event music)
- Castle tours for visitors
- Tutoring by pupils for pupils
- Tik Tok

# Discover Schloss Neubeuern

WE LOOK FORWARD TO SEEING YOU!





**Schloss  
Neubeuern**  
INTERNATSGYMNASIUM

**Schloss Neubeuern – Internatshaus mit Tagesschule**  
Schlossstraße 20, 83115 Neubeuern  
0049 (0)8035 9062-0, [info@schloss-neubeuern.de](mailto:info@schloss-neubeuern.de)  
[www.schloss-neubeuern.de](http://www.schloss-neubeuern.de)